

Carrière de BRS
 Aywaille -5
 Tir du 06/10/2022
 Sismographe placé au
 261 Halleux
 4710 Comblain-au-Pont

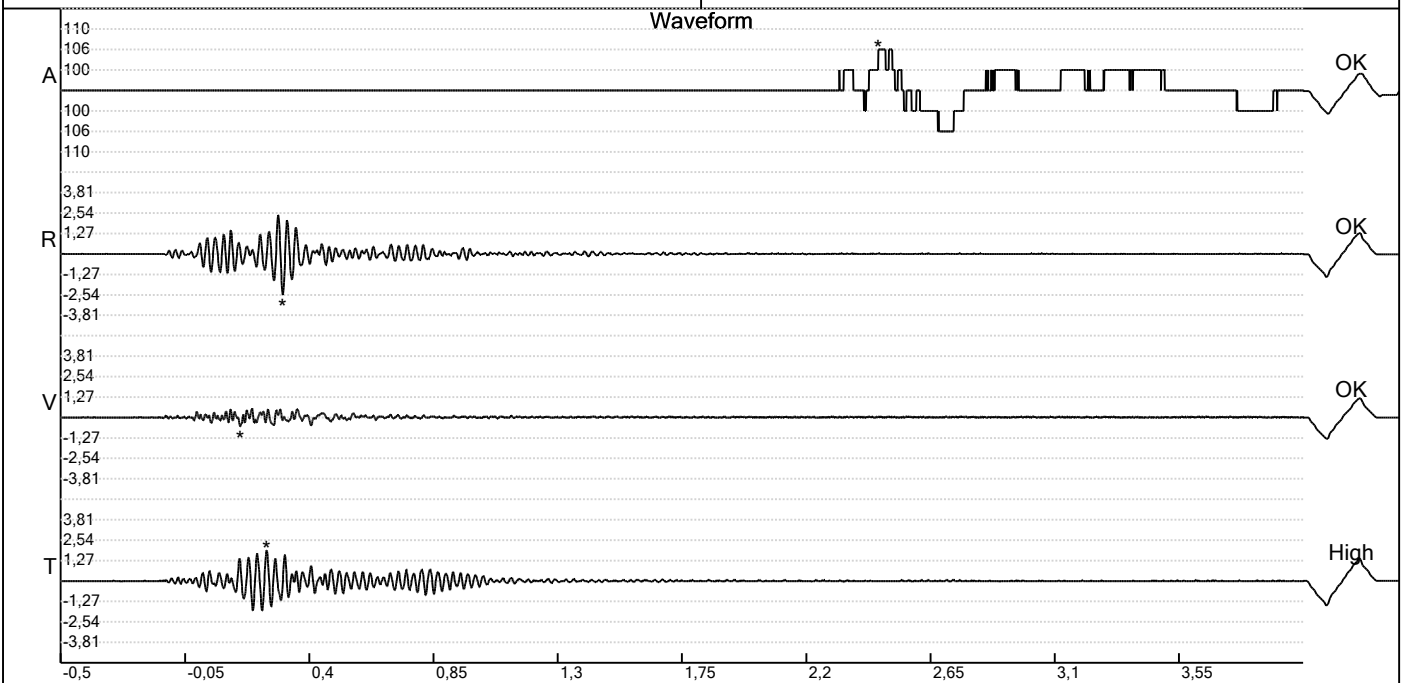
Record: 2107202210061552233.dtb
 Number: 233
 Seismograph: Mini-Seis 2107
 Type of Record: Waveform
 Date: 06-10-22 15:52:00
 Duration: 4,50 Seconds
 Sample Rate: 1024
 Pre-Trigger: 0,5 Seconds
 Seismic Trigger: 0,508 mm/s
 Acoustic Trigger: 106,0 dB
 Seismic Gain: 63,5
 Acoustic Gain: 141,9 dB
 Voltage: 6,3

Peaks and Frequencies

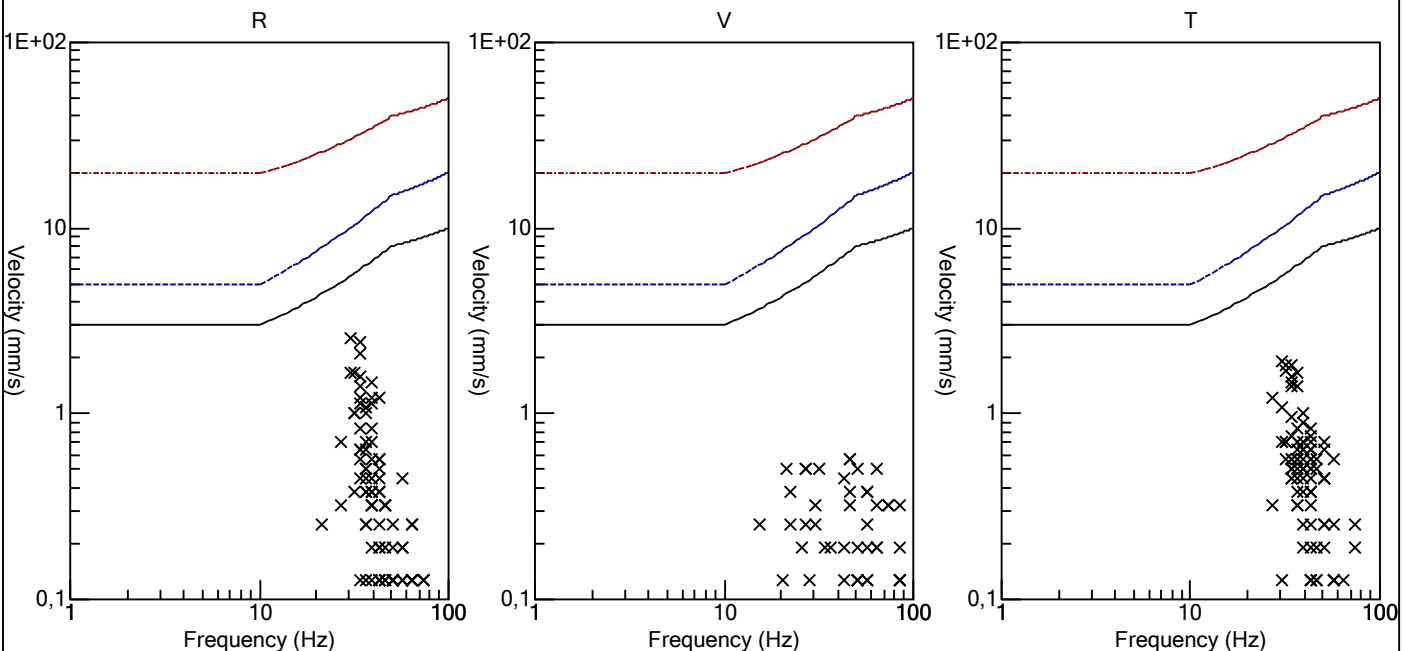
PPV Maximum (Geo #1): 2,54 mm/s
 Acoustic #1: 106,0 dB @ 8,2 Hz (2,460938 s)
 Radial #1: 2,54 mm/s @ 30,1 Hz (0,3037109 s)
 Vertical #1: 0,572 mm/s @ 46,5 Hz (0,1494141 s)
 Transverse #1: 1,91 mm/s @ 30,1 Hz (0,2451172 s)
 Last Calibration Date: 23-04-19

Graph Information

Time Range: -0,5 s to 4 s, Intervals: 0,4500 Seconds



Velocity vs. Frequency (DIN 4150-3 Tab 1)

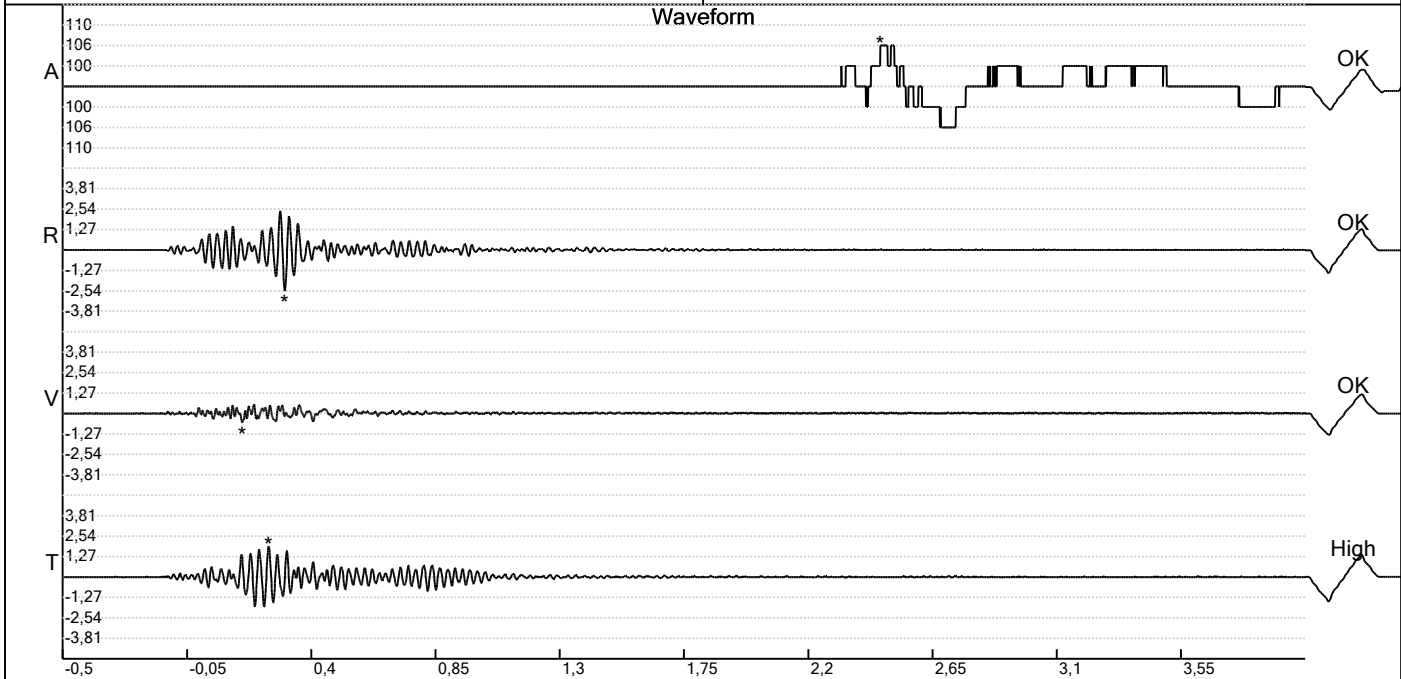


Carrière de BRS
 Aywaille -5
 Tir du 06/10/2022
 Sismographe placé au
 261 Halleux
 4710 Comblain-au-Pont

Record: 2107202210061552233.dtb
 Number: 233
 Seismograph: Mini-Seis 2107
 Type of Record: Waveform
 Date: 06-10-22 15:52:00
 Duration: 4,50 Seconds
 Sample Rate: 1024
 Pre-Trigger: 0,5 Seconds
 Seismic Trigger: 0,508 mm/s
 Acoustic Trigger: 106,0 dB
 Seismic Gain: 63,5
 Acoustic Gain: 141,9 dB
 Voltage: 6,3

Peaks and Frequencies
 PPV Maximum (Geo #1): 2,54 mm/s
 Acoustic #1: 106,0 dB @ 8,2 Hz (2,460938 s)
 Radial #1: 2,54 mm/s @ 30,1 Hz (0,3037109 s)
 Vertical #1: 0,572 mm/s @ 46,5 Hz (0,1494141 s)
 Transverse #1: 1,91 mm/s @ 30,1 Hz (0,2451172 s)
 Last Calibration Date: 23-04-19

Graph Information
 Time Range: -0,5 s to 4 s, Intervals: 0,4500 Seconds



Fast Fourier Transform (Amplitude Spectrum)

